

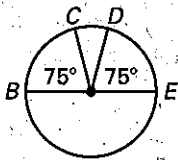
6.2 Notes Continued

Arc Addition Postulate:

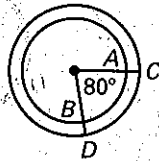
Congruent Arcs:

Example: Tell whether the given arcs are \cong . Explain.

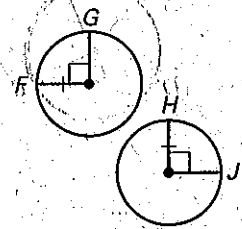
a. \widehat{BC} and \widehat{DE}



b. \widehat{AB} and \widehat{CD}

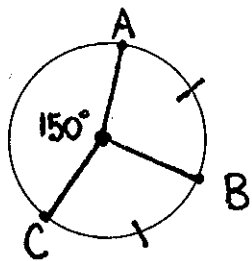


c. \widehat{FG} and \widehat{HJ}

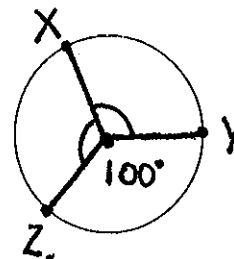


Find the indicated arc measure.

1. $m\widehat{AB}$



2. $m\widehat{XZY} =$



Two diameters of $\odot C$ are \overline{QR} and \overline{TS} . Find each indicated arc measure if $m\widehat{SR} = 48^\circ$

1. $m\widehat{QS} =$

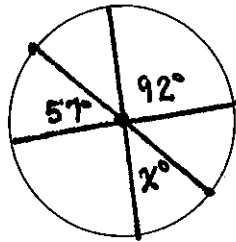
2. $m\widehat{QT} =$

3. $m\widehat{TQS} =$

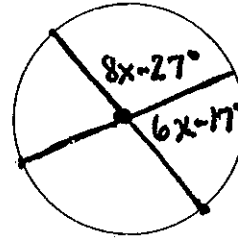
4. $m\widehat{TSR} =$

Find the value of x .

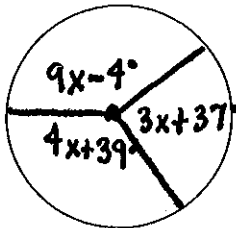
1.



2.



3.



4.

